



November 8, 2023

Township Of Mapleton

7275 Sideroad 16

Drayton, ON

N0G 1P0

Attention: Mapleton Residents

**Reference: Community Engagement Meeting
IESO LT1 RFP Mapleton Power Inc.**

Proposed Development: 8548 Wellington County Road 7 Moorefield, ON

Dear Property Owner,

2G Energy Corp. is a Qualified Applicant under the IESO's LT1 procurement program and are working together with the owner of the property located at 8548 Wellington County Road 7 Moorefield, ON, more specifically shown by the **attached** map.

Ontario's power grid is gearing up for a robust upgrade, aiming to competitively furnish up to 4,000 MW of dispatchable energy resources between 2026 and 2028. 2G Energy Corp. is a Qualified Applicant in the Independent Electricity System Operator's (IESO) Long-Term Request for Proposals (LT1 RFP) program, is spearheading four projects (4) for the December RFP submission.

The Independent Electricity System Operator (IESO) of Ontario has initiated the Long-Term Request for Proposals (LT1 RFP) program to address the province's emerging electricity system needs. These needs are driven by an increase in demand, the retirement of the Pickering nuclear plant, refurbishments of other nuclear units, and expiring contracts for existing facilities. The LT1 RFP aims to competitively procure 2,518 MW of year-round effective capacity from dispatchable new build resources. These resources include new build storage facilities larger than 1 MW, capable of delivering a continuous amount of electricity for at least four consecutive hours.

In the broader context, the LT1 RFP program is a part of Ontario's efforts to secure a substantial amount of electricity capacity (up to 4,000 MW) through the first Long-Term Request for Proposals and the complementary expedited procurement process known as the Expedited Process. This program is crucial for ensuring the reliability and adequacy of electricity supply in Ontario, particularly as the province enters a period of rising electricity demand and faces the retirement and refurbishment of several nuclear generating units.

2G Energy Corp. is working with Mapleton Power Inc. who have received a positive result from the LT1 Deliverability Test, and they would like to now work through the process to get a Municipal Council Support Resolution for their Natural Gas Reciprocating Engine Power Plant Project with a capacity up to 17.5 MW.



Prior to appearing before the City Council, we would like to take the opportunity to discuss the proposal in more detail with you. The purpose of this meeting is to provide a forum for the applicant and surrounding property owners/residents to review the proposal and to identify issues so that they may be considered before a development application is submitted to the City. This meeting gives you the opportunity to share with us any special information you know about the property involved. We will attempt to answer questions which may be relevant to meeting development standards consistent with Mapleton Township's Community Development Code and the respective Community Plan.

You are invited to attend the meeting on:

Monday, November 27, 2023, at 9:00 am EST

The meeting will be virtual on Microsoft Teams:

Meeting link: <https://www.microsoft.com/en-ca/microsoft-teams/join-a-meeting>

Meeting ID: 227 550 144 206

Passcode: PVib4y

Or call in (audio only) +1 289-273-8077

Phone Conference ID: 119 749 868#

Link to Community Engagement Webpage <https://2gpower.ca/mapleton-energy/>

To receive an e-mailed invite to the virtual Community Engagement meeting, please contact crystal.webster@cemeng.ca and an invitation will be forwarded to you. For instructions on how to log in to MS Teams to attend the virtual meeting please see the **attached** guide.

Please note this meeting will be an informational meeting on preliminary development plans. These plans may be altered prior to submittal of the application to the City. Depending upon the type of land use action required, you may receive official notice from Mapleton Township for you to participate with written comments and/or an opportunity to attend a public meeting. We look forward to more specifically discussing the proposal with you. If you have questions, please contact us at the emails and phone numbers below.

Sincerely,

Dan Jones
519 760 9477
d.jones@2-g.com

Korb Whale
519 589 7310
korbwhale@hotmail.com

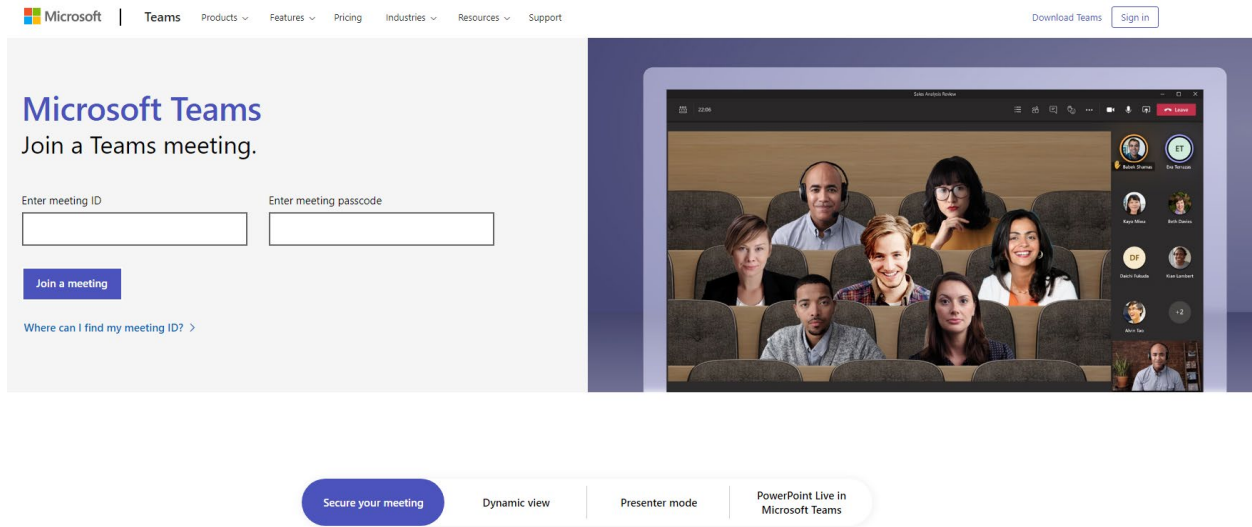
Milton Maragh
226 558 3910
m.maragh@2-g.com

*Attachments: Land Registry Map
MS Teams login instructions*

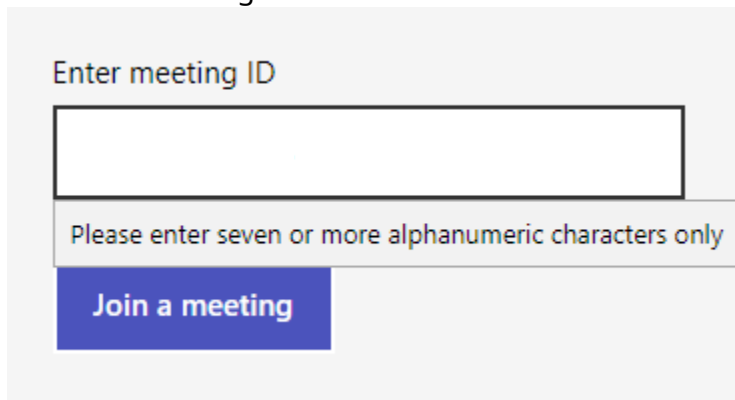


To log in to the Community Engagement meeting:

Navigate in your web browser to: <https://www.microsoft.com/en-ca/microsoft-teams/join-a-meeting>



Enter the Meeting ID: 227 550 144 206





Enter the Meeting Passcode: PVib4y

Enter meeting passcode

Please enter alphanumeric characters only

Select Join a meeting

Please enter seven or more alphanumeric cha

Join a meeting

Select Continue on this browser



Join your Teams meeting



Continue on this browser

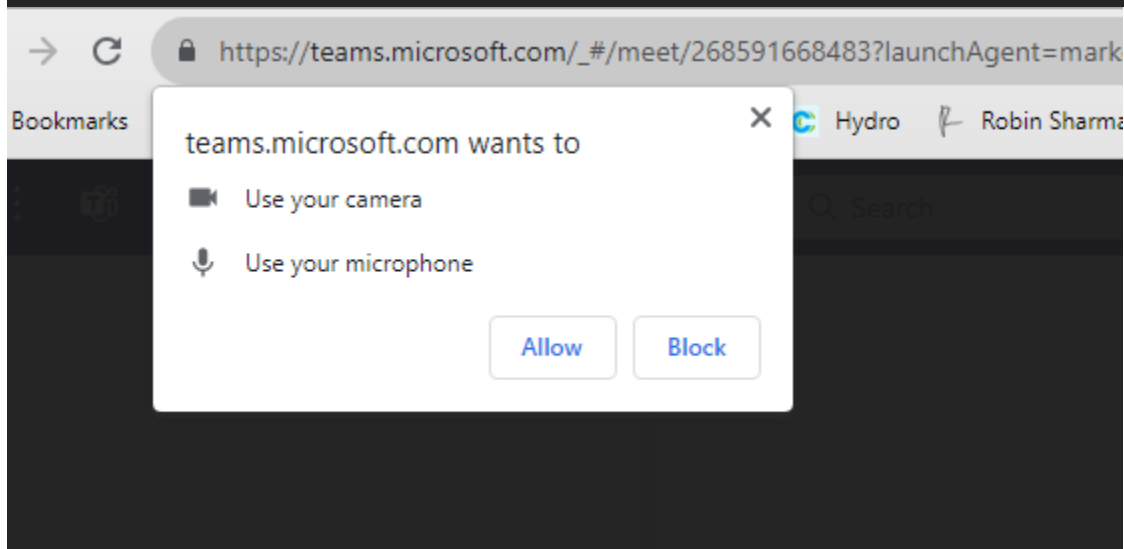
Join on the Teams app

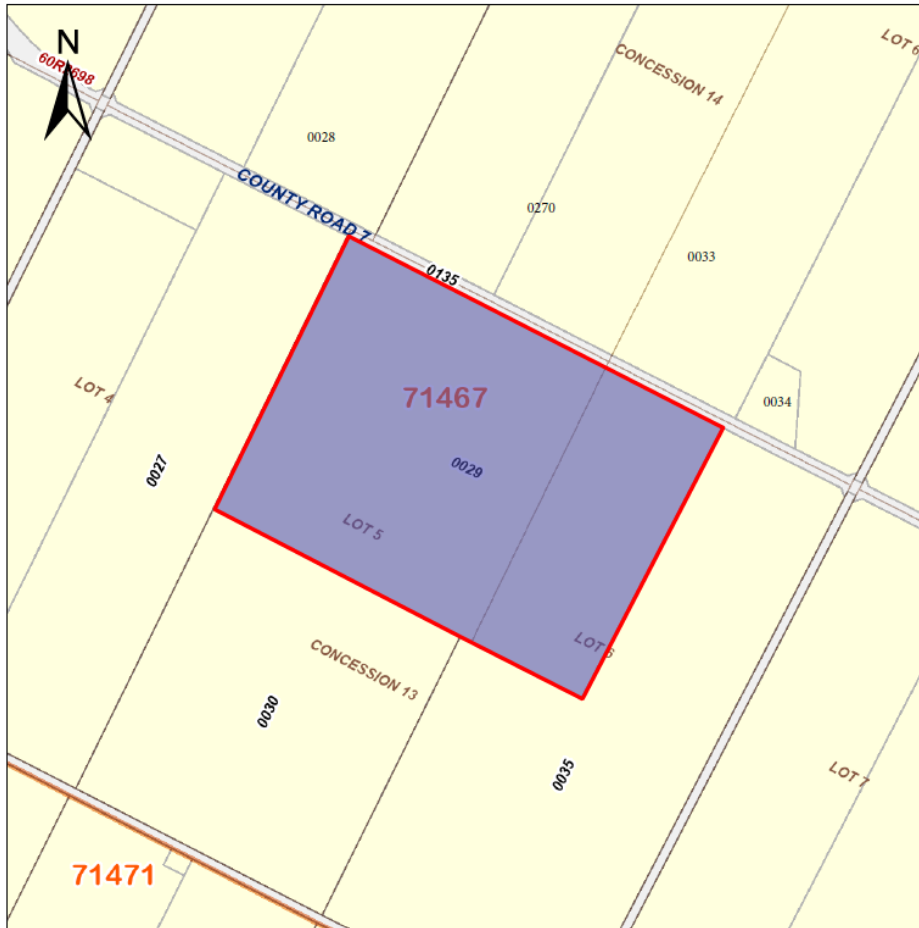


Select Allow to let Microsoft Teams use your mic and camera for calls and meetings on this browser

Select Allow to let Microsoft Teams use your mic and camera for calls and meetings on this browser.

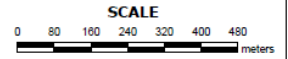
When you do, we'll turn your devices on for a moment to set them up.





ServiceOntario

PRINTED ON 31 OCT, 2023 AT 11:38:59
FOR 2G ENERGY



PROPERTY INDEX MAP
WELLINGTON(No. 61)

LEGEND

FREEHOLD PROPERTY	
LEASEHOLD PROPERTY	
LIMITED INTEREST PROPERTY	
CONDOMINIUM PROPERTY	
RETIRED PIN (MAP UPDATE PENDING)	
PROPERTY NUMBER	0449
BLOCK NUMBER	08050
GEOGRAPHIC FABRIC	
EASEMENT	

THIS IS NOT A PLAN OF SURVEY

NOTES

REVIEW THE TITLE RECORDS FOR COMPLETE PROPERTY INFORMATION AS THIS MAP MAY NOT REFLECT RECENT REGISTRATIONS

THIS MAP WAS COMPILED FROM PLANS AND DOCUMENTS RECORDED IN THE LAND REGISTRATION SYSTEM AND HAS BEEN PREPARED FOR PROPERTY INDEXING PURPOSES ONLY

FOR DIMENSIONS OF PROPERTIES BOUNDARIES SEE RECORDED PLANS AND DOCUMENTS

ONLY MAJOR EASEMENTS ARE SHOWN

REFERENCE PLANS UNDERLYING MORE RECENT REFERENCE PLANS ARE NOT ILLUSTRATED

