

STANTON GREEN ENERGY INC.

13514 TWELVE MILE ROAD, ILBERTON ON, CANADA, N0M 2A0
519-666-0800

IESO LT1 RFP, Stanton Green Energy Inc.

COMMUNITY ENGAGEMENT PLAN

BEFORE COMMUNITY MEETING

PROJECT WEBSITE: <https://2gpower.ca/>

PROJECT NAME: Stanton Green Energy

NAMEPLATE CAPACITY: UP TO 12.5 MW

TECHNOLOGY: Natural Gas-Fired, Reciprocating Engine Power Generator

LEGAL NAME OF PROPONENT: STANTON GREEN ENERGY INC.

CONTACT OF PROPONENT: 1. DAN JONES, PH: 519-760-9477

2. LAURIE STANTON, PH: 519-859-1865

3. MILTON MARAGH, PH: 226-558-3910

A DESCRIPTION OF PUBLIC ENGAGEMENT ACTIVITIES AND OPPORTUNITES

- **Resiliency & Reliability** – The LT1 program and this project specifically will provide increased power quality and reliability to the local area.
- **Lower Emissions** – This facility will feature high efficiency engines which will have lower emissions than larger, gas turbine-based generation facilities also participating in the LT1 program.
- **Local Job Creation** – The project will require skilled trades during the construction phase of the project and it will deliver additional revenue to the Stanton facility improving its long-term economic viability.

The meeting will be virtual on Microsoft Teams:

Meeting link: <https://www.microsoft.com/en-ca/microsoft-teams/join-a-meeting>

Meeting ID: 218 564 685 269

Passcode: PsV7zQ

Or call in (audio only) +1 289-273-8077

Phone Conference ID: 240 951 888#

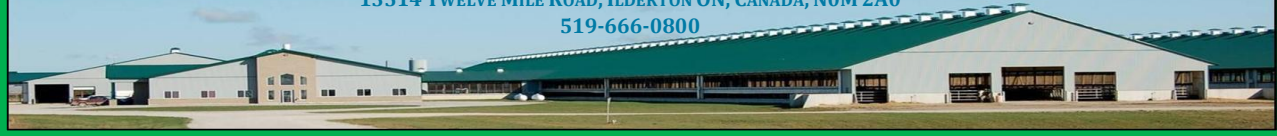
Link to Community Engagement Webpage <https://2gpower.ca/>

NOTICE OF MEETING: Tuesday, November 28, 10:00 am EST Virtually

POSTED NOVEMBER 8, 2023

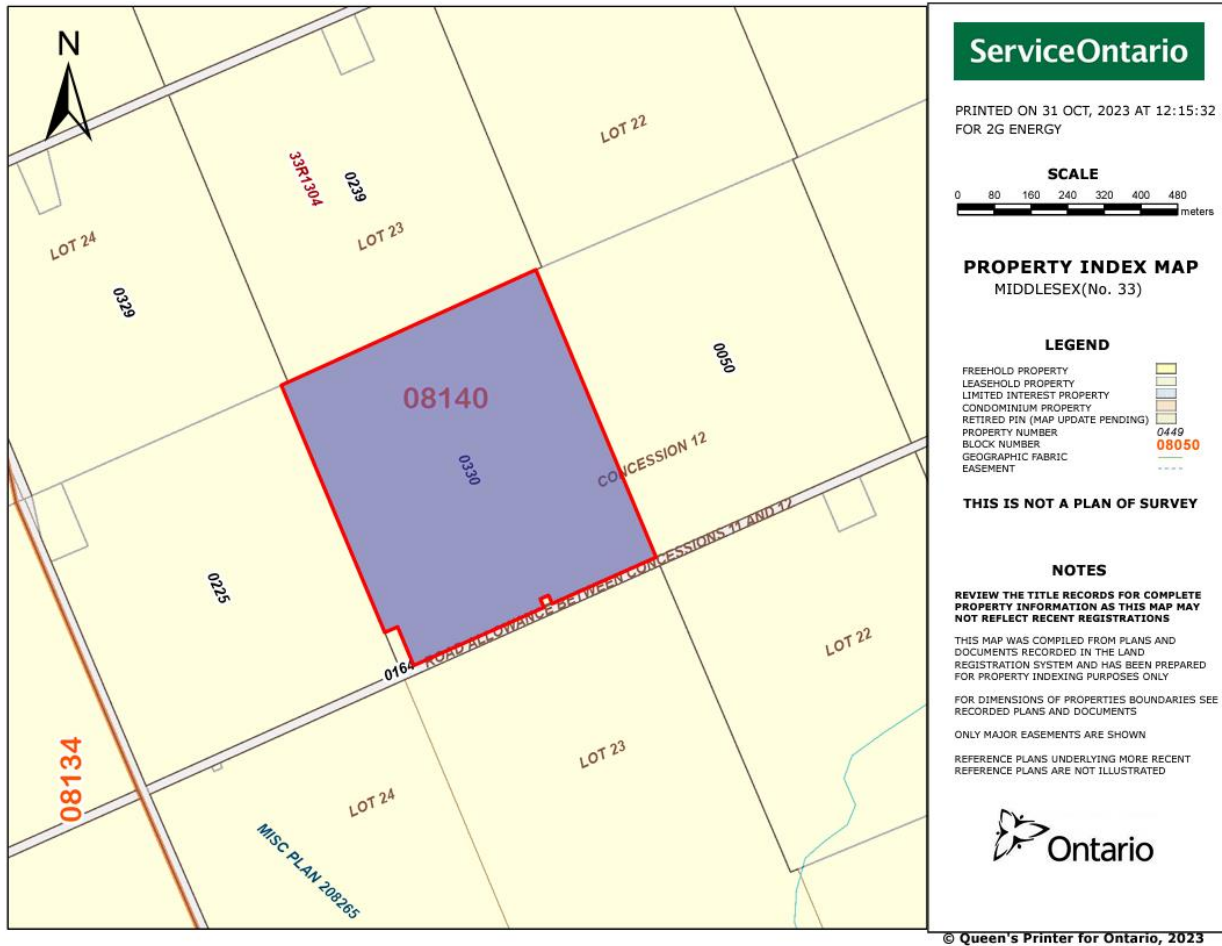
STANTON GREEN ENERGY INC.

13514 TWELVE MILE ROAD, ILBERTON ON, CANADA, N0M 2A0
519-666-0800



IESO LT1 RFP, Stanton Green Energy Inc. COMMUNITY ENGAGEMENT PLAN

SCALE MAP SHOWING THE BOUNDARIES OF THE PROJECT SITE, WITH LOCATION OF THE CONNECTION POINT AND THE CONNECTION LINE



STANTON GREEN ENERGY INC.

13514 TWELVE MILE ROAD, ILBERTON ON, CANADA, N0M 2A0
519-666-0800

IESO LT1 RFP, Stanton Green Energy Inc.

COMMUNITY ENGAGEMENT PLAN

