



# COMMUNITY ENGAGEMENT PLAN

## BEFORE COMMUNITY MEETING

### PROJECT WEBSITE:

NAME: PLANTinum POWER Inc.

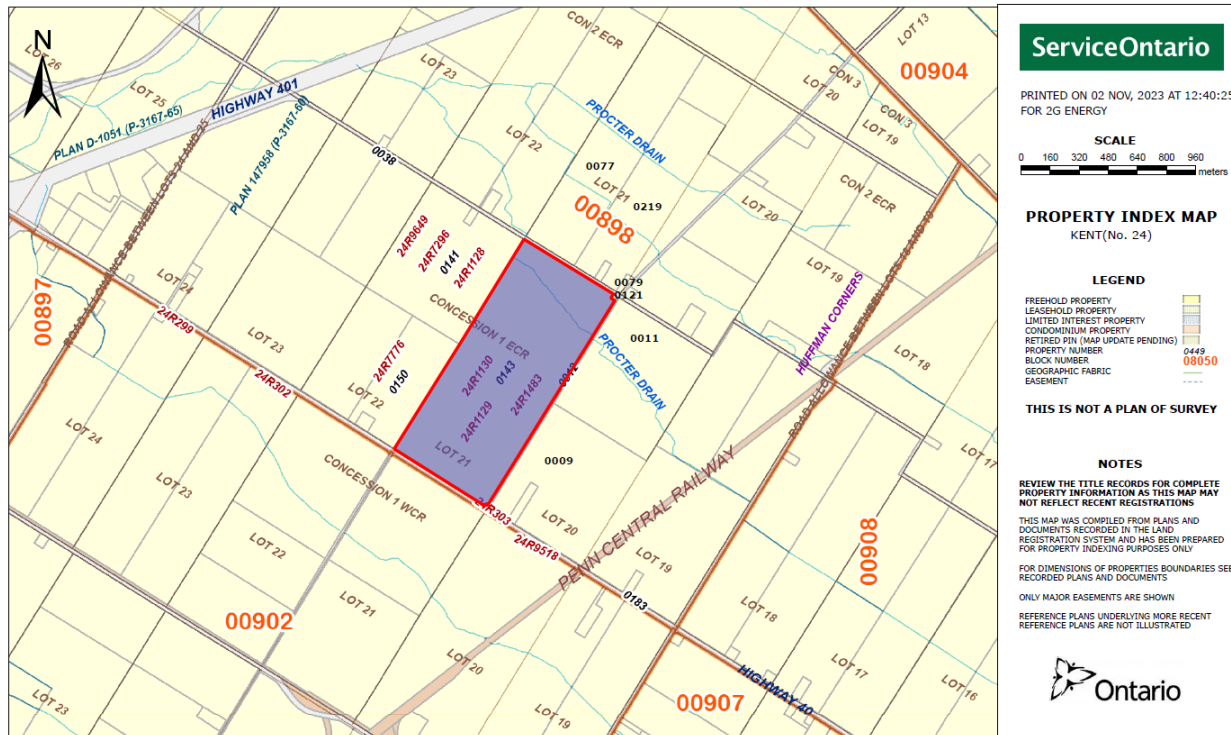
NAMEPLATE CAPACITY: 3.3 MW

TECHNOLOGY: Natural Gas-Fired Reciprocating Power Generator

LEGAL NAME OF PROPONENT: PLANTINUM POWER INC.

- CONTACT OF PROPONENT:
1. DAN JONES, PH: 519-760-9477
  2. MILTON MARAGH, 226-558-3910
  3. TIM VERBEEK, 519-809-3884

### SCALE MAP SHOWING THE BOUNDARIES OF THE PROJECT SITE, WITH LOCATION OF THE CONNECTION POINT AND THE CONNECTION LINE



## COMMUNITY ENGAGEMENT PLAN



### A DESCRIPTION OF PUBLIC ENGAGEMENT ACTIVITIES AND OPPORTUNITIES

- Resiliency & Reliability – The LT1 program and this project specifically will provide increased power quality and power reliability to the local area.
- Lower Emissions – This facility will feature high efficiency engines which will have lower emissions than larger, gas turbine-based generation facilities also participating in the LT1 program.
- Local Job Creation – The project will require skilled trades during the construction phase of the project and it will deliver additional revenue to the Platinum Produce facility improving its long-term economic viability.



## COMMUNITY ENGAGEMENT PLAN

Tuesday, November 28, 2023, at 3:00 pm EST

The meeting will be virtual on Microsoft Teams:

**Meeting link:** <https://www.microsoft.com/en-ca/microsoft-teams/join-a-meeting>

**Meeting ID:** 281 508 403 608

**Passcode:** qgKfQo

**Or call in (audio only)** +1 289-273-8077

**Phone Conference ID:** 758 490 064#

Link to Community Engagement Webpage <https://platinumproduce.com/cogeneration-opportunity/>

**POSTED NOVEMBER 8, 2023**



## COMMUNITY ENGAGEMENT PLAN

### POST MEETING

Copy/Summary of minutes of public community meeting

Public community meeting is available to members of the public at large, collectively.

The minutes must document that the public community meeting included:

- A description and display of the legal name and contact information of the Proponent
- The name, Nameplate capacity and generating or storage technology of the long-term reliability project
- A scale map showing the boundaries of the project site, location of the connection Point and approximate location of the connection line
- A Q & A opportunity where members of the public have an opportunity to ask questions to the Proponent in a manner accessible to all other members of the public attending the meeting